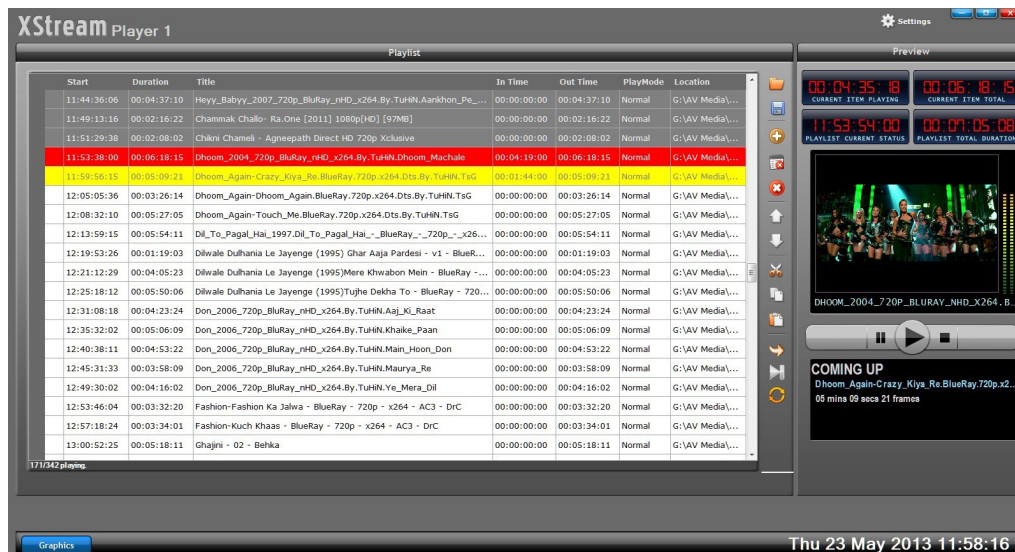


## Video Playout System

XStream provides automated content playout for satellite channels, cable head-ends, over-the-air broadcasters. It is designed to be extremely robust, in order to meet the highest reliability demands of on-air playout. A single XStream server offers the same visual quality at its single- or multi-channel SDI outputs, graphics and subtitle insertion, last-minute playlist changes and clip editing.

Any combination of clips at differing resolutions, bit rates, profiles and levels can be played in a single sequence seamlessly with no glitches. The cut from one clip to another is completely seamless even with live streams - no black frames, no pause, no last frame freeze, no audio pops, no glitches, no duration limitations. Every clip in the playlist, except the one which is currently playing, can be trimmed, edited or repositioned. Moreover, playlist order can be changed on-the-fly with commands like skip to next or jump. Such order changes are performed seamlessly without stopping current playout session.



### KEY FEATURES

- Support for both standard and high definition pre-compressed content, with multiple video formats
- Multiple Compression format support.
- Automated play out of content from the server,
- Support Playing out Live content
- Facility to Browse clips while editing the play list so the operator can see the clips before he adds it to the schedule.
- Dynamic channel branding, including logos, tickers, scrolls and flash animation with real time RSS and XML data feeds from news agencies or other sources.
- Special graphics elements to show "Coming up next" and "Showing Now".
- RAID keeps you on air even if one of Hard disk fails at the time of on-air.
- Internal storage of 6TB (expandable to 16TB) that can be expanded by using external storage box to meet growing requirements.



## Features

- Compatible with MPEG2,HDV,DV,AVC/H.264,WMV/VC-1,MPEG-1 clips
- Supports a multitude of media containers : MPEG system, program, transport streams, AVI, raw DV, MXF, QuickTime, etc
- Mixed playout of all compressions and containers in a single playlist
- Clips at different resolutions, profiles and bit rates can coexist in the same playlist
- Totally unlimited on-air playlist editing
- Output video scaling for picture-in-picture and info channel look with live video and graphics
- Content trimming and editing
- High reliability and seamless playlist playback
- Flexible As Run logging

## Technical Specification

- **SDI Video Output** : 1 x 10 bit SD/HD switchable.
- **SDI Audio Output** : 8 Channels embedded in SD and HD.
- **Sync Input** : 1 x sync input. Blackburst in SD, 720p50, 720p59.94, 1080i50 and 1080i59.94 formats or Tri-Sync in any HD format.

## Video Standards

- **SD Format Support** : 625/25 PAL, 525/29.97 NTSC and 525/23.98 NTSC.
- **HD Format Support** : 720p50, 720p59.94, 720p60, 1080PsF23.98, 1080p23.98, 1080PsF24, 1080p24, 1080PsF25, 1080p25, 1080PsF29.97, 1080p29.97, 1080PsF30, 1080p30, 1080i50, 1080i59.94 and 1080i60.

## Graphics Elements

- **Crawl** : Horizontally Running text messages
- **Rolls** :Vertically Rolling Credits And Messages
- **Animations** : Channel Logos (Animated Gif, Flash Animations)
- **Text** : Still Text Labels
- **Pictures** : Still Graphics (Supported File Formats: BMP, JPEG, PNG, TGA)
- **Feeds** : RSS Feed, XML

## Physical Specification

- 3U Rack Mountable with Mounting Rails
- Intel Quad-Core Processor
- 4 GB DDR3 RAM
- 6 TB RAID-5 Storage
- 1 x Slim DVD ROM
- Dual Gigabit(10/100/1000Mbps) Ethernet
- 760W Triple Redundant Power Supply



### Rudraksha Technology Private Limited

B-401, Sai Sangam, Sector-15, CBD Belapur, Navi Mumbai, India 400614  
www.rtpl.co.in • Phone +91 22 6712 2797 • Fax +91 22 6712 2796  
Support and Services • support@rtpl.co.in  
Sales • sales@rtpl.co.in